

39°37'E

39°38'E

39°39'E

BERTH DETAILS

Berth No.	Length(m)	Draft	BerthType1	BerthType2	BerthType3	Restrictio	Lat. (S)	Long.(E)
1	333	10	General	Passenger	Roro		4.057836	39.648158
3	237	10	General	Bulk			4.055131	39.647907
4	213	10	General	Bulk			4.053055	39.647405
5	111	10	General				4.051727	39.647031
7	211	9.75	General	Bulk		Tidal	4.049615	39.645612
8	139	10	General	Bulk	Veg.Oil	Tidal	4.048637	39.644661
9	215	10.95	General	Bulk		Tidal	4.047272	39.644091
10	187	10	General	Bulk		Tidal	4.045511	39.643243
11	216	10	General	Bulk	Roro		4.043113	39.63747
13	292	10	General	Bulk	Roro		4.043286	39.635231
14	240	9.8	General	Bulk	Roro		4.043377	39.632973
16	250	12.5	Container				4.044503	39.629101
17	252	12.5	Container				4.045743	39.627023
18	337	12.5	Container				4.046954	39.624929
20	220	11	Container				4.048391	39.618524
21	350	15	Container				4.050046	39.617411
22	300	15	Container				4.050951	39.614716

OIL TERMINALS

Name	Lat (S)	Long.(E)
New KOT	4.054773	39.626806
SOT	4.043552	39.641292

POINTS OF INTEREST

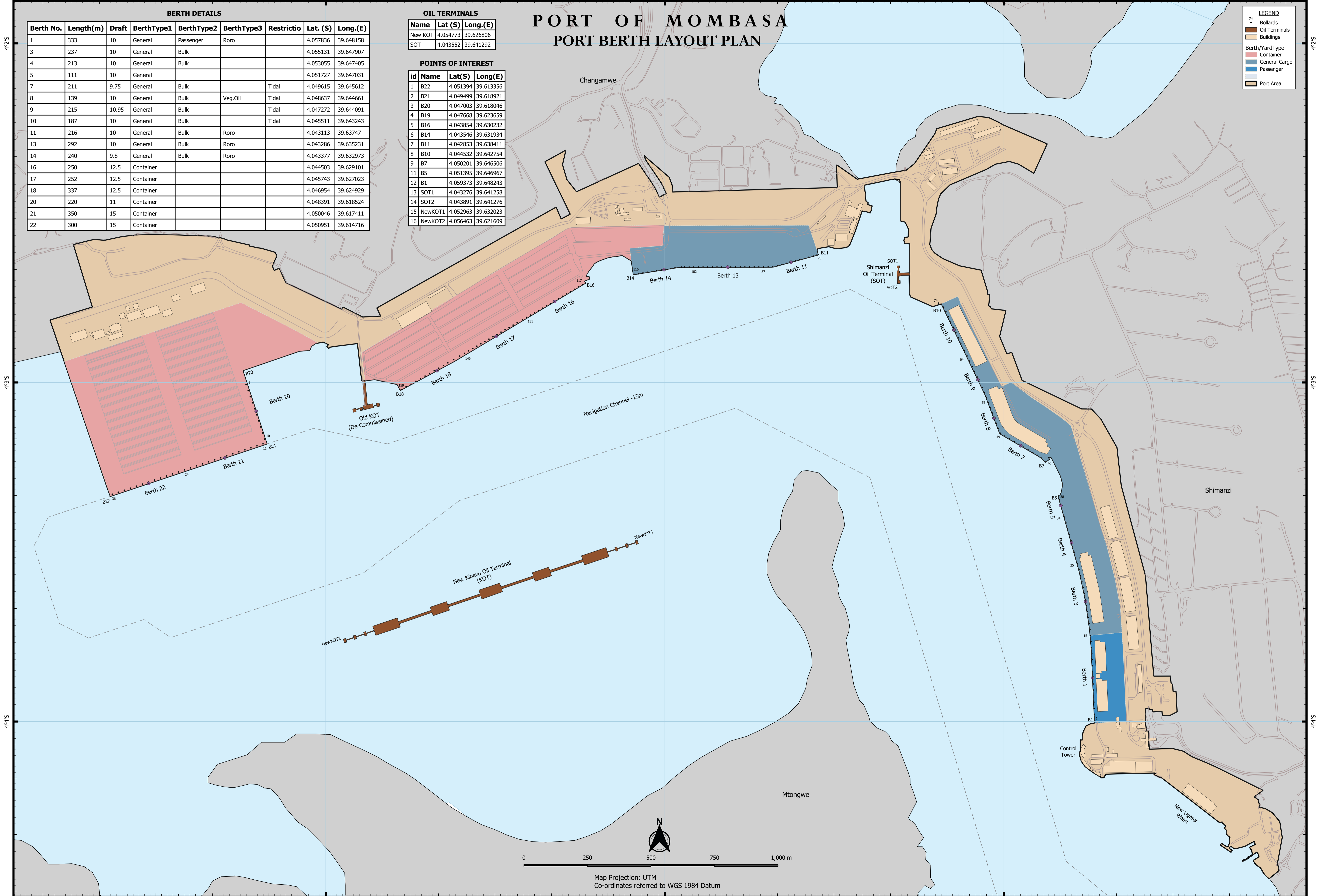
id	Name	Lat(S)	Long(E)
1	B22	4.051394	39.613356
2	B21	4.049499	39.618921
3	B20	4.047003	39.618046
4	B19	4.047668	39.623659
5	B16	4.043854	39.630232
6	B14	4.043546	39.631934
7	B11	4.042853	39.638411
8	B10	4.044532	39.642754
9	B7	4.050201	39.646506
11	B5	4.051395	39.646967
12	B1	4.059373	39.648243
13	SOT1	4.043276	39.641258
14	SOT2	4.043891	39.641276
15	NewKOT1	4.052963	39.632023
16	NewKOT2	4.056463	39.621609

PORT OF MOMBASA

PORT BERTH LAYOUT PLAN

LEGEND

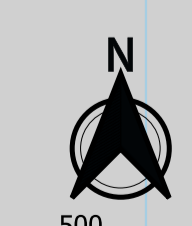
- 74 Bollards
- Oil Terminals
- Buildings
- Berth/YardType
- Container
- General Cargo
- Passenger
- Port Area



Navigation Channel -15m

Old KOT
(De-Commissined)

New Kipevu Oil Terminal
(KOT)



0 250 500 750 1,000 m

Map Projection: UTM
Co-ordinates referred to WGS 1984 Datum

39°37'E

39°38'E

39°39'E